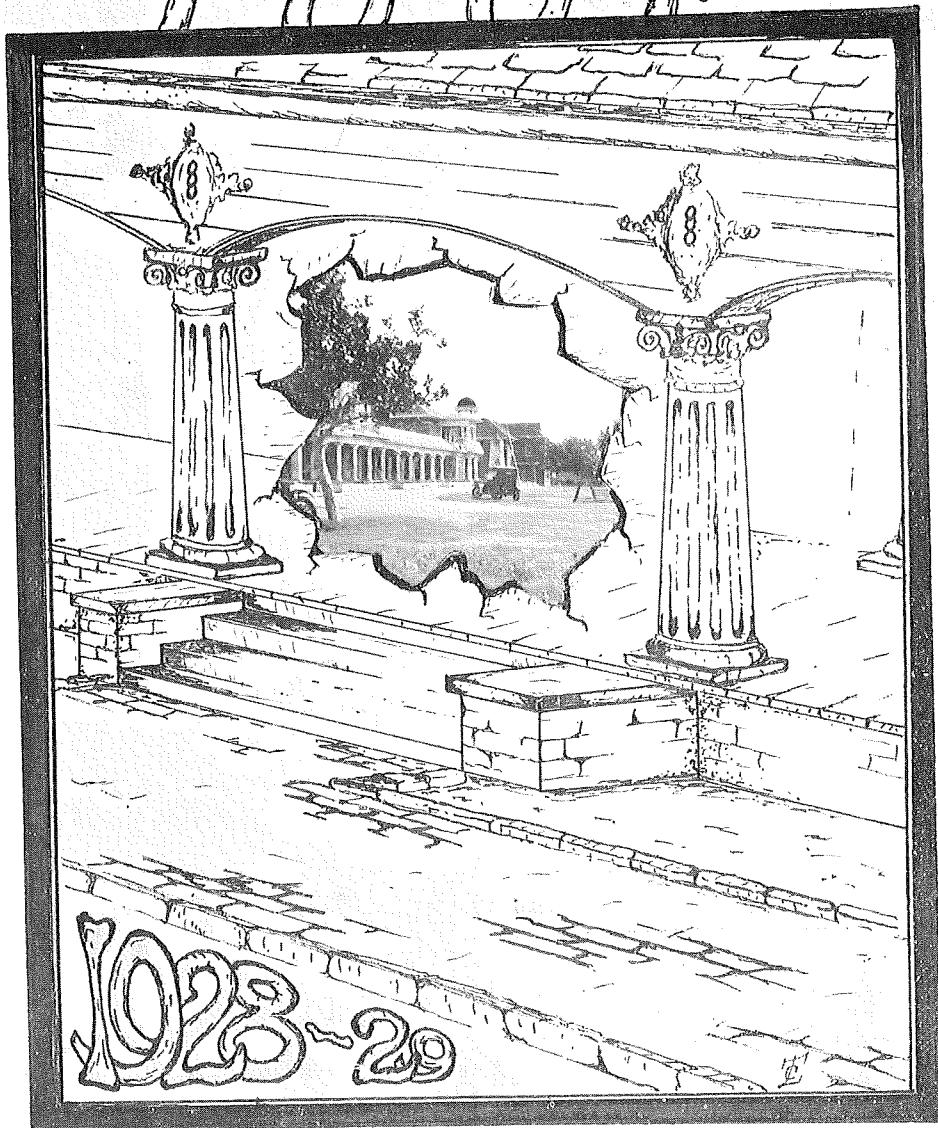


The  
Brick Walk

1929

100 F



1023-29

FE  
BRICK HALL

# The Brickwalk

1929

RUBY HITT  
Sport Editor

MELBA CHAPMAN  
Editor

KITTY ARLEDGE  
Assistant Editor

PEARL FLETCHER  
Business Manager

JULIA HALL  
Assistant Business Manager



## Foreword

Our name, "The Famous Class of '29," reminds us that we must do something to retain the title. May the "Brickwalk" be an inspiration to us and to every student who comes after us. With the memory of what has come before, we will climb higher to attain our goal.

—SENIORS '29.



# Dedication

To those who have given us our wonderful home; to the ones who have protected us, clothed us, and fed us; to those whom we love for their interest in our welfare; to our "fathers and mothers" . . . . .

THE ODD FELLOWS AND REBEKAHS  
OF TEXAS

# Contents

THE SCHOOL  
ACTIVITIES

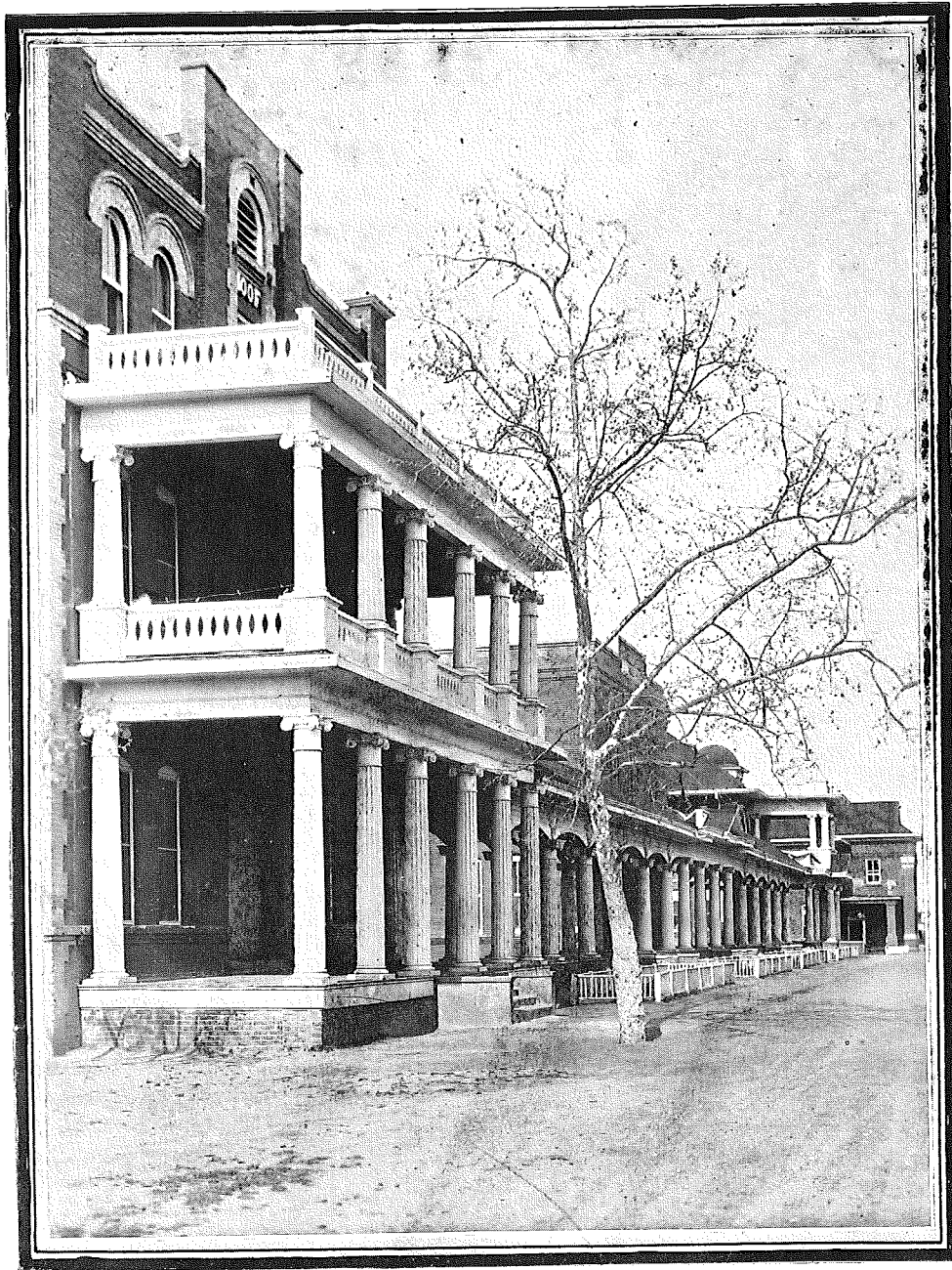
FUN

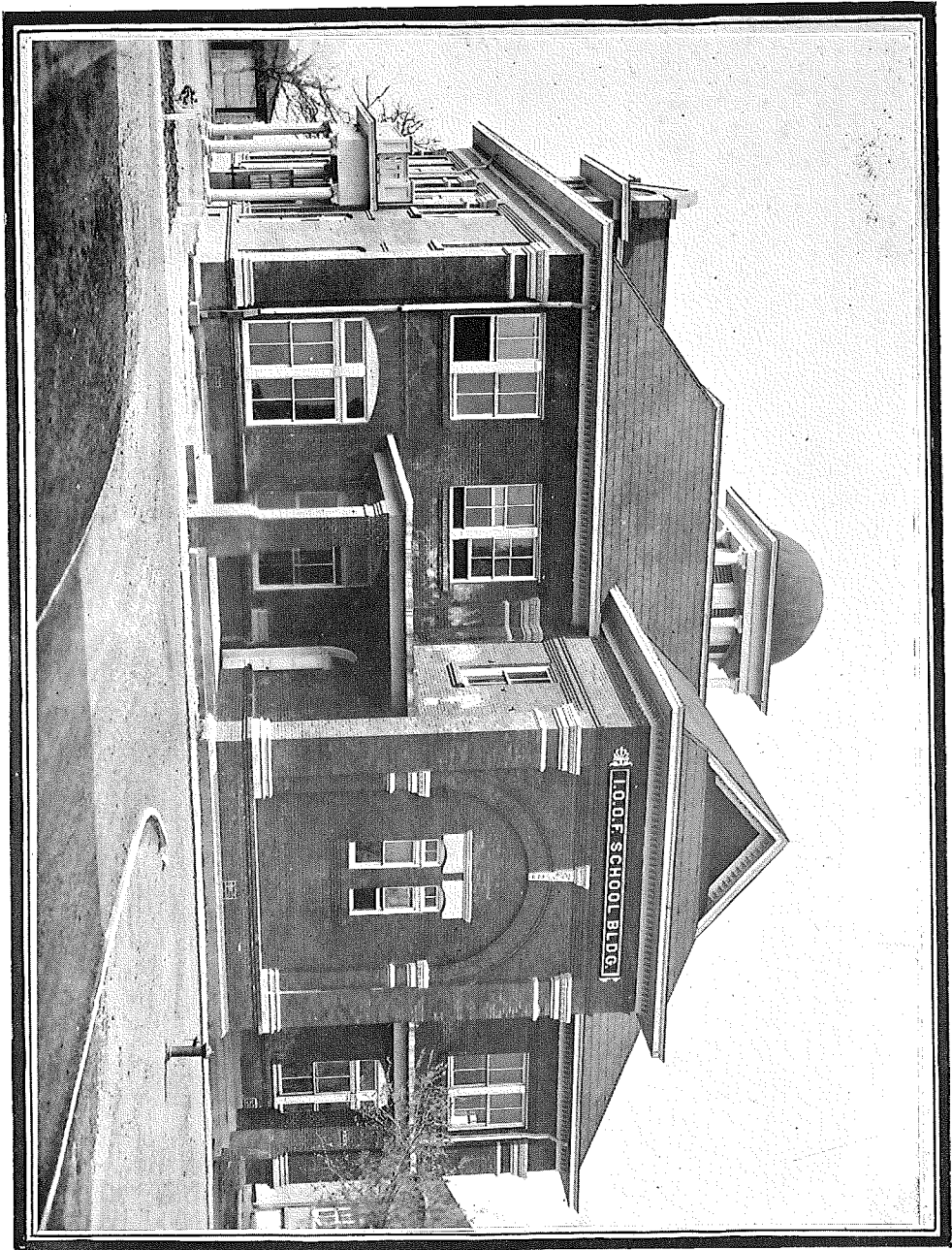
AND

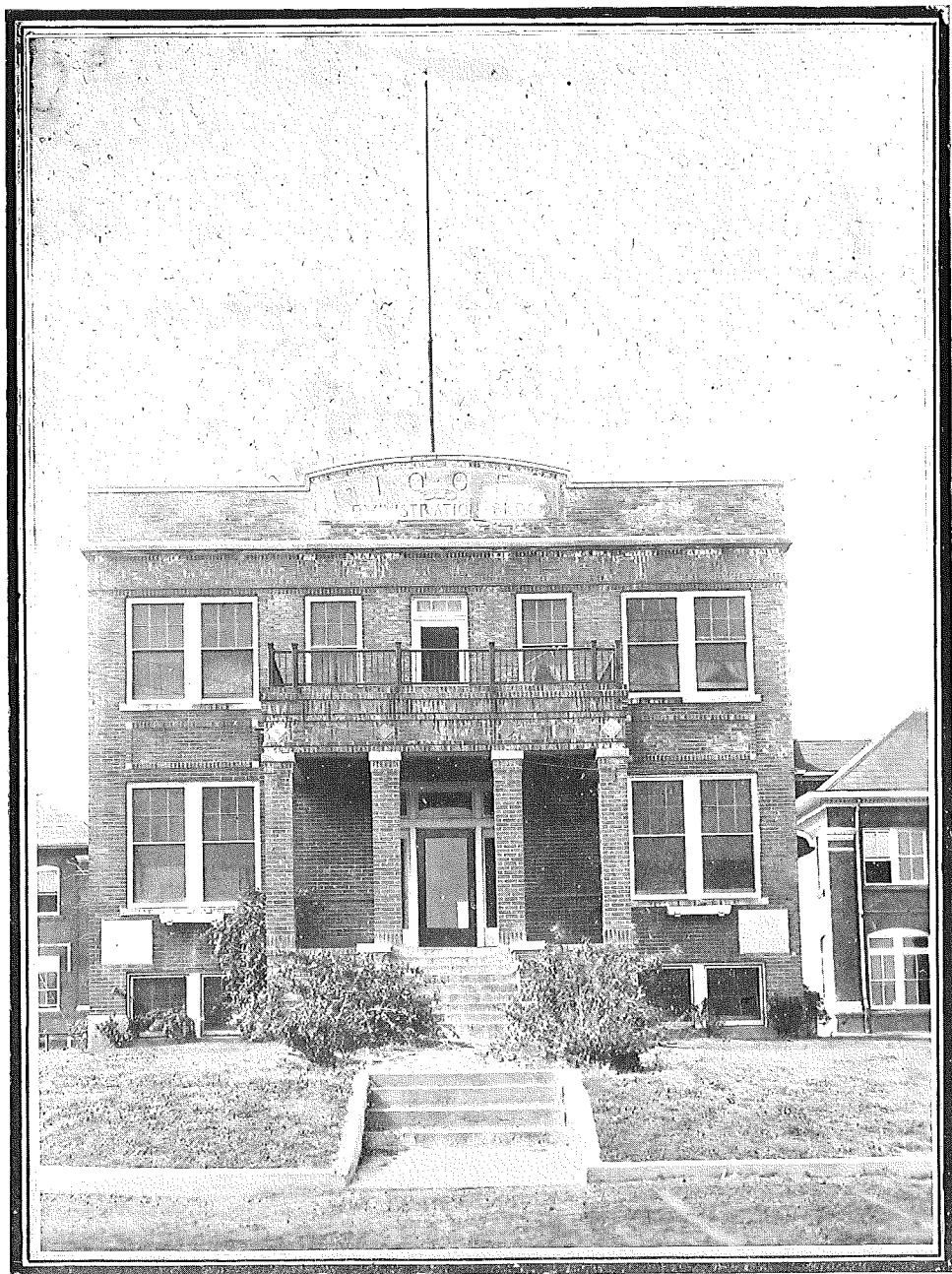
ADS.

# The School



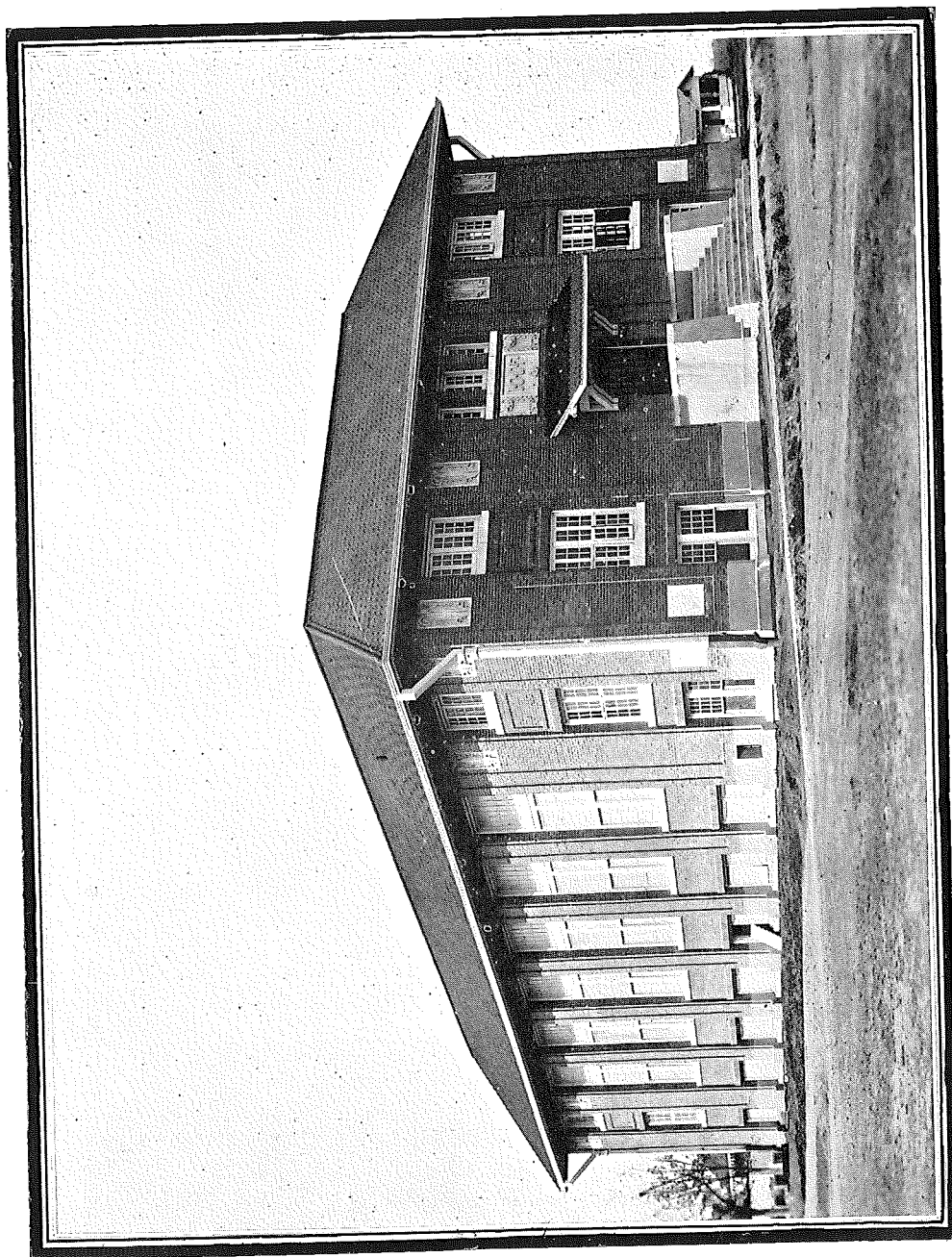












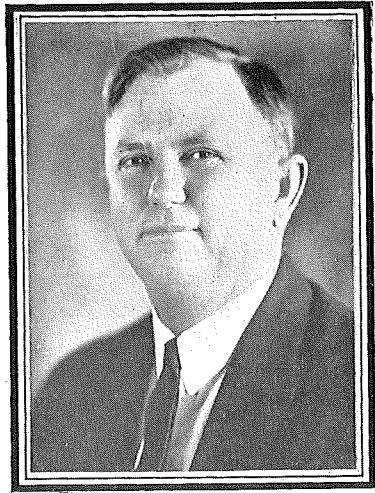
# Administration



## W. & O. Home Board



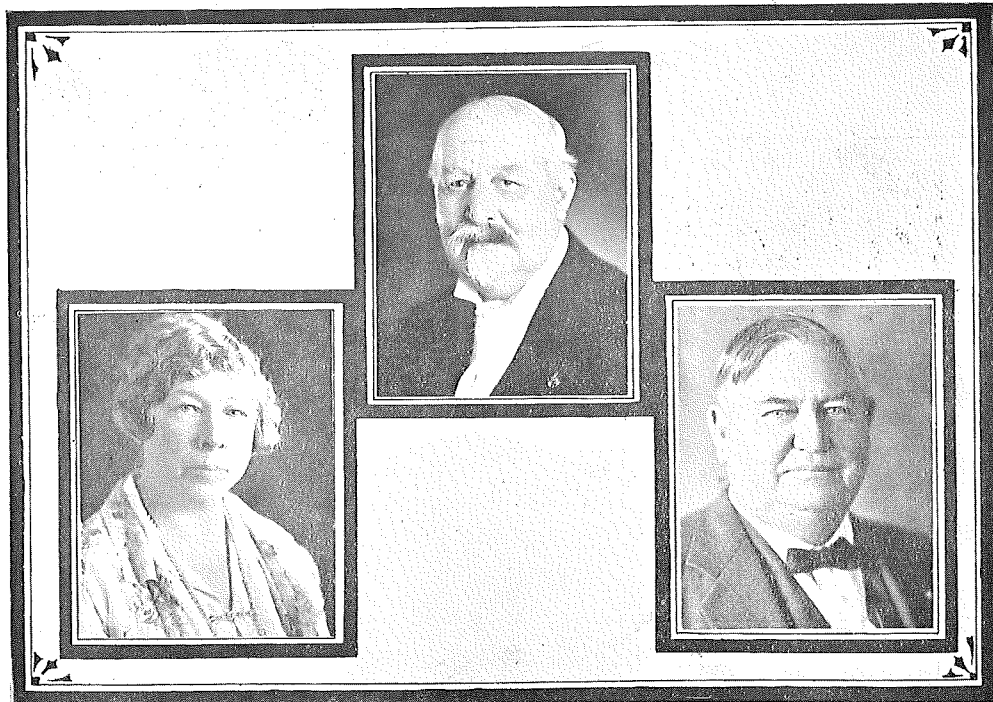
# School Board



O. A. BATEMAN  
Superintendent  
1928



MRS. O. A. BATEMAN  
Matron  
1928





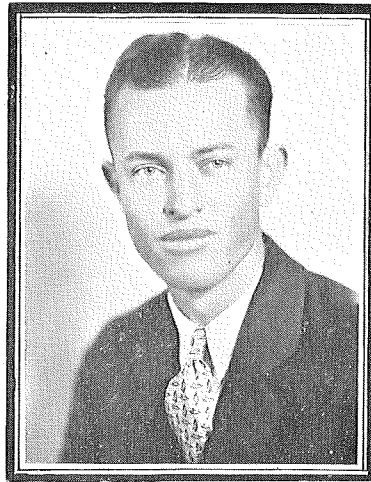
ROSS G. HARRIS  
Superintendent  
1929



MRS. ROSS G. HARRIS  
Matron  
1929

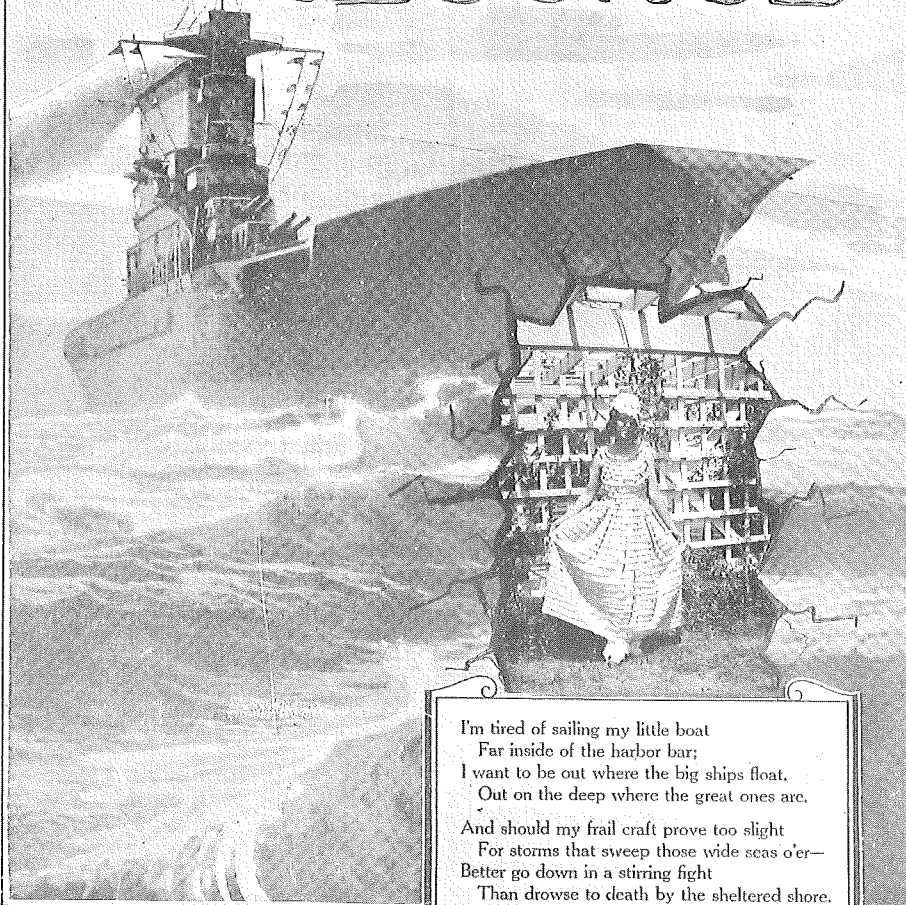








# JUNIOR MESSAGE



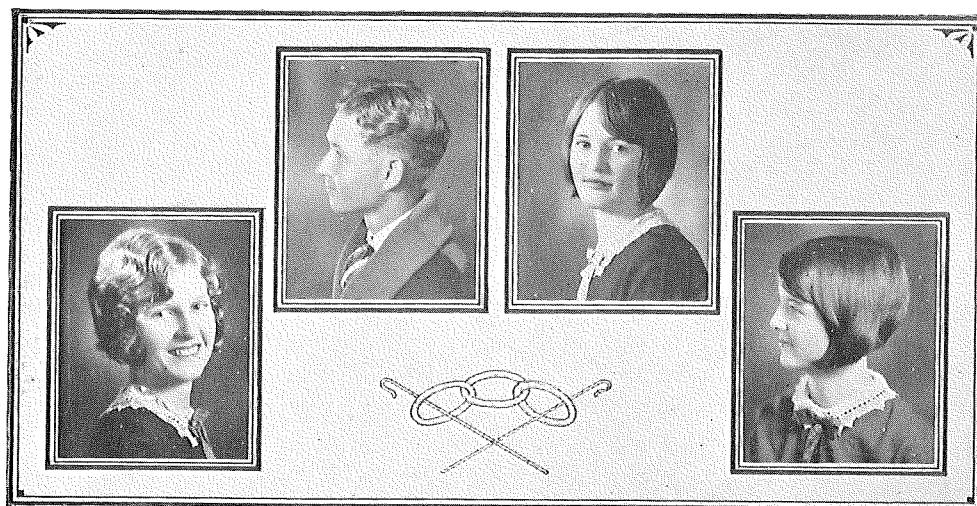
I'm tired of sailing my little boat  
Far inside of the harbor bar;  
I want to be out where the big ships float,  
Out on the deep where the great ones arc.  
And should my frail craft prove too slight  
For storms that sweep those wide seas o'er—  
Better go down in a stirring fight  
Than drowse to death by the sheltered shore.

*Author Unknown*



President.....Pearl Fletcher  
 Sponsor.....P. J. Fenley  
 Secretary.....Julia Hall  
 Treasurer.....Opal Whitaker





### FRANKIE HITT

Jolly Girls' Club 1927-1929, Glee Club 1924-1926, Orchestra 1924-1929, God's Sunshine Carriers 1928, President Sophomore Class 1927, Basket Ball 1925-1929, Dramatic Arts Club 1928.

Frankie has the pep and knows how to make others get it.

### WILBUR JOHNSON

Football 1928-1929, O. K. Club 1928  
God's Sunshine Carriers 1928

With a brain such as "Hop's", nothing seems out of reach.

### BERTHA OWNBEY

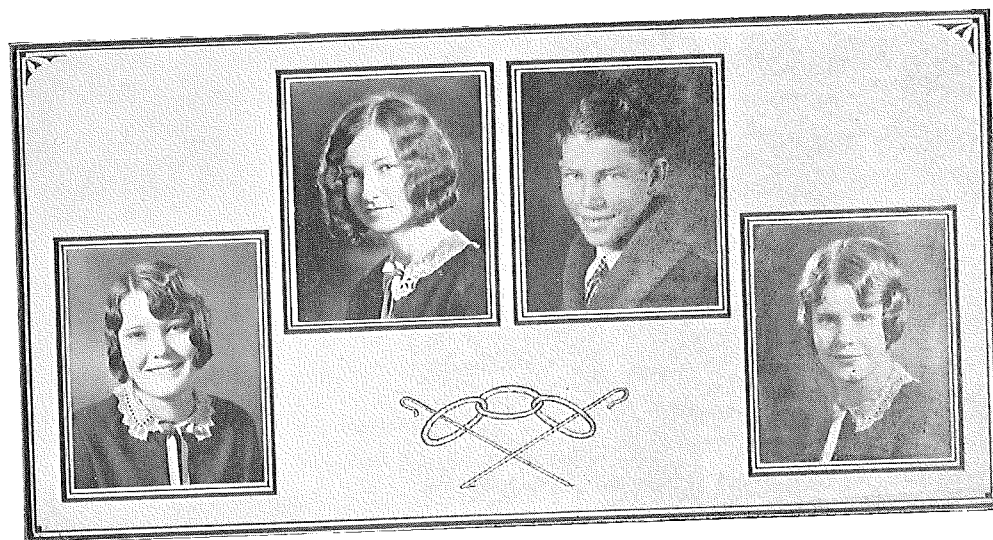
Jolly Girls' Club 1928-1929, God's  
Sunshine Carriers 1928

Every inch of her height is an inch of delight. Come on, "Boat."

### VENETA WEBB

Jolly Girls' Club 1928-1929, God's Sunshine Carriers 1928, Glee Club 1928-1929,  
Orchestra 1927-1929.

"Skeeter" is another dangerous thing! Watch out, she'll bite.



### NEVELYN BLANKENSHIP

Jolly Girls' Club 1928-1929, God's Sunshine Carriers 1928, Basket Ball 1925-1929, Dramatic Arts Club 1928-1929.

"Dit" got smart and made high school in three years—but study all the time?—not "Dit".

### JULIA HALL

Jolly Girls' Club Secretary 1926-1929, God's Sunshine Carriers Secretary 1928, Glee Club 1923-1929, Orchestra 1924-1929, Secretary Senior Class 1923-1929, Assistant Business Manager Annual 1929.

"Joots"—the kid with a blush full of "it". "Joots" has ideas of her own and sees to it that they are well cared for.

### SPENCER BONHAM

Football 1928, O. K. Club 1928, God's Sunshine Carriers 1928.

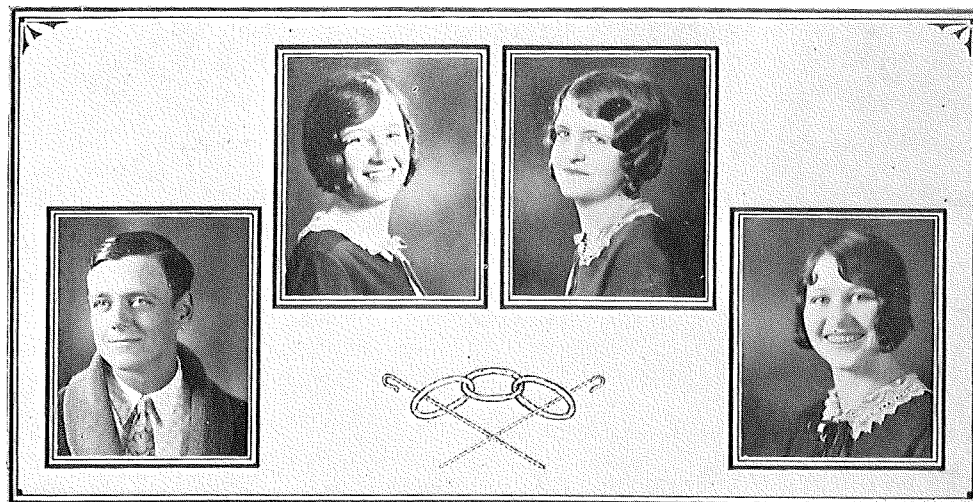
Step right up and call me speedy!

### MELBA CHAPMAN

Jolly Girls' Club 1926-1929, Secretary '28, '29, God's Sunshine Carriers 1928, Glee Club 1925-1929, Orchestra 1924-1929, Dramatic Arts Club 1928, Basket Ball 1927-1929, Editor-in-Chief Annual 1929, Correspondent of "Texas Odd Fellow" 1928-1929.

Melba's been called an ideal student. She is about the easiest, freest, happiest girl in the world.





### FRED WALKER

Football 1927-1929, Basket Ball 1927-1929, O. K. Club 1928, God's Sunshine Carriers 1928, Band 1925-1929.

"The sheik of Araby—he all belongs to"—somebody else.

### OPAL WHITAKER

Jolly Girls' Club 1927-1929, God's Sunshine Carriers 1928, Glee Club 1927-1929, Orchestra 1924-1929, Superintendent's Secretary 1928-1929, Treasurer Senior Class 1928-1929.

She has but one object in life—to do her duty. She does it and more.

### EDNA WILKINS

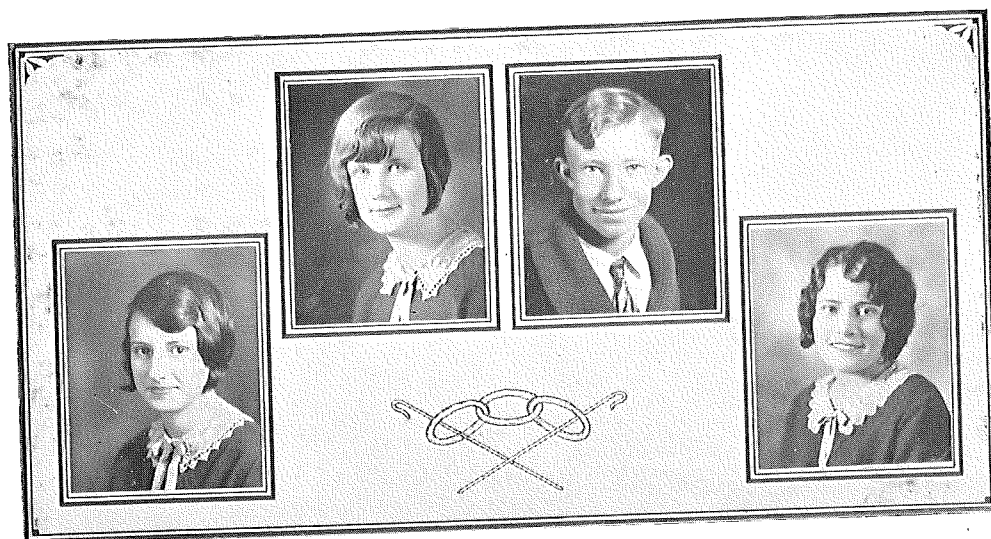
Jolly Girls' Club 1926-1929, God's Sunshine Carriers 1928, Glee Club 1923-1929, Orchestra 1927-1929.

Edna has a throat that gargles alto and a mouth that can't swallow her whistle

### MARY ELLEN YARBROUGH

Jolly Girls' Club 1928-1929, God's Sunshine Carriers 1928, Dramatic Arts Club 1928, Assistant Art Editor Annual 1929.

A soft tongue such as Mary Ellen's could never speak harsh words.



### PEARL FLETCHER

Jolly Girls' Club 1927, President 1928-1929, God's Sunshine Carriers President 1928, Glee Club 1925-1929, Basket Ball 1924-1929, Captain '29, President Junior Class 1927-1928, President Senior Class 1928-1929, Business Manager Annual 1929, Correspondent "Texas Odd Fellow" 1928-1929, President Jolly Girls' Club 1928.

If silence were gold, Pearl would be a pauper.

### MAE FOSTER

Jolly Girls' Club 1926-1929, God's Sunshine Carriers 1928, Dramatic Arts Club 1928, Basket Ball 1927, Sponsor Jolly Juniors Club 1928-1929.

"Happy" is sincere and steady but eevr ready for a good time.

### STERLING BRISTER

O. K. Club 1928, God's Sunshine Carriers 1928, Band 1925-1929.

The world knows nothing of its greatest men.

### GRACE GIBSON

Jolly Girls' Club 1926-1929, Glee Club 1926-1929, God's Sunshine Carriers 1928, Art Editor Annual 1929.

"I want to tell the world she's beautiful; pretty too." Grace is good looking plus her numerous other good qualities

## Senior Class History

MELBA CHAPMAN

In September, 1925, there were twenty students in the Freshmen Class. Being "green fish", we thought high school was a paradise. We have learned though that the paradise comes after. It was in 1925 that we met Miss Ross and Mr. Fenley (frown and all), who have been with us throughout our high school career.

In 1926 the Sophomores were met by the same teachers. We were a little more dignified as we thought of the honor we had of being the Senior Class' pals. At the end of the year, there were only fourteen left in the class.

When we became Juniors in 1927, we began calling ourselves the "Famous Class of '29." We were full of pep then and we were sure we could not be called anything else. At the end of the year, we lost two of our most popular classmates, Mabel Woodin and Steve Russell.

When we became Seniors in '28, we lost our dignity, as we found out we could make a good record some other way. We had expected to have only twelve in the Senior Class, but four students from the Junior Class, Spencer, Frankie, Nevelyn, and Mae, made us sixteen. We decided to publish an annual this year and decided to put it over, as it would be the first to be published. Pearl Fletcher was chosen business manager and Melba Chapman, editor. In the contest held for the annual, two of the Seniors won places. Pearl Fletcher was chosen as the most popular girl, and Melba Chapman won favorite's place.

The Senior Class, in submitting this history to you, merely want you to realize that they have really "gone through it."

# Senior Class Will

MELBA CHAPMAN

We, the Senior Class of '29, of the I. O. O. F. High School, do make and publish this our last will and testament:

To the Juniors, we will (as we have no dignity) our name and good record. May they keep the record as good as we have.

To the Sophomores, we will our pep and brotherly love. May they be as good to their class pals, as we have been to them.

To the Freshmen, we will good luck. May they make good their climb for Seniorship, as we did.

Spencer Bonham wills his curls to Elizabeth Tice. Who claims her "bobby pins"?

Fred Walker wills his geometry notebook to Bill Vest, hoping he can make geometry at least in one year.

Wilbur Johnson wills his enlarged vocabulary to Minnie Wilson. There won't be any more stuttering in English class.

Sterling Brister wills his ability to draw to "Peacock" Christian. She must never put "Roughly" on her paper.

Pearl Fletcher wills her speed in typewriting to John Bunny Chapman. This will be a great aid to such a promising young lawyer.

Frankie Hitt wills her English notebook to Jim Ben Williams. He needs one for second year English yet.

Julia Hall wills to Levie Brandon her place as "pioneer of the Home."

Nevelyn Blankenship wills her efficiency to B. F. Johnson. He will still make it "slow but sure."

"Boat" Ownbey and Opal Whitaker will their "true Chum" sayings to Curtis Tyler and Mattie Fox.

Edna Wilkins, Veneta Webb, and Mary Ellen Yarbrough will their beautiful voices to Norvelle Ray, Johnnie Mae Ratliff, and Gwendolyn Reeder. This will enable them to sing "Are You Ready?" to perfection.

Mae Foster wills her ability to declaim to Inda Ray.

Grace Gibson wills her place as favorite among the boys to Loree Hamilton, Mattie Fox, and Curtis Tyler.

As I have been asked to, although I don't know why, I will my good record to Iola Fowler. If she has found one for me, I should like to have it.

# Senior Class Prophecy

MELBA CHAPMAN

As is the custom, "The Famous Class of '29" is holding its annual banquet. As we have no class poet, I will quote the following in honor of the occasion:

"How many, classmates, meet to-night  
Around our schoolday's covered embers?  
Go read the treasured names aright  
The old triennial list remembers;  
Though twenty wear the starry sign  
That tells a life has broke its tether,  
The sweet sixteen of 'twenty-nine—  
God bless The Class!—are all together!

Of course, our president, Pearl Fletcher, is at the head of the table. At her left is Julia Hall. The two most competent stenographers of the I. and G. N. Railroad Company were transferred to Hollywood, California, after a year's labor in Palestine, Texas.

Next in line, we see the world-famous actors, Grace Gibson and Sterling Brister. Grace's dark beauty was such a foil for Sterling's blond aspect, that they are called the "perfect screen lovers." Their acting is excelled only by Bertha Ownbey's, who is a "second Polly Moran." Her acting is the scandal of Hollywood as it used to be of the Junior-Senior Hall.

The Metropolitan Opera Company has engaged two of our classmates for the season. Edna Wilkins is known as the greatest singer in the world, and Veneta Webb is the greatest violinist.

Fred Walker is now at the head of the English Department at Harvard. I am not surprised, though, for Fred always was smart in English.

Wilbur Johnson is known as the world's greatest orator. He is now using his effective speaking in a campaign for the use of better English.

Have you heard of the civil engineer who is doing so much construction work in South America? Of course; it is Spencer Bonham.

Nevelyn Blankenship is the greatest swimmer in the world. She won the title by swimming from California to the Hawaiian Islands. I suppose she will win a movie contract now.

Frankie Hitt is the girls' basketball coach at C. I. A. She makes her team run a "lap" every day. I wonder who she got the habit from?

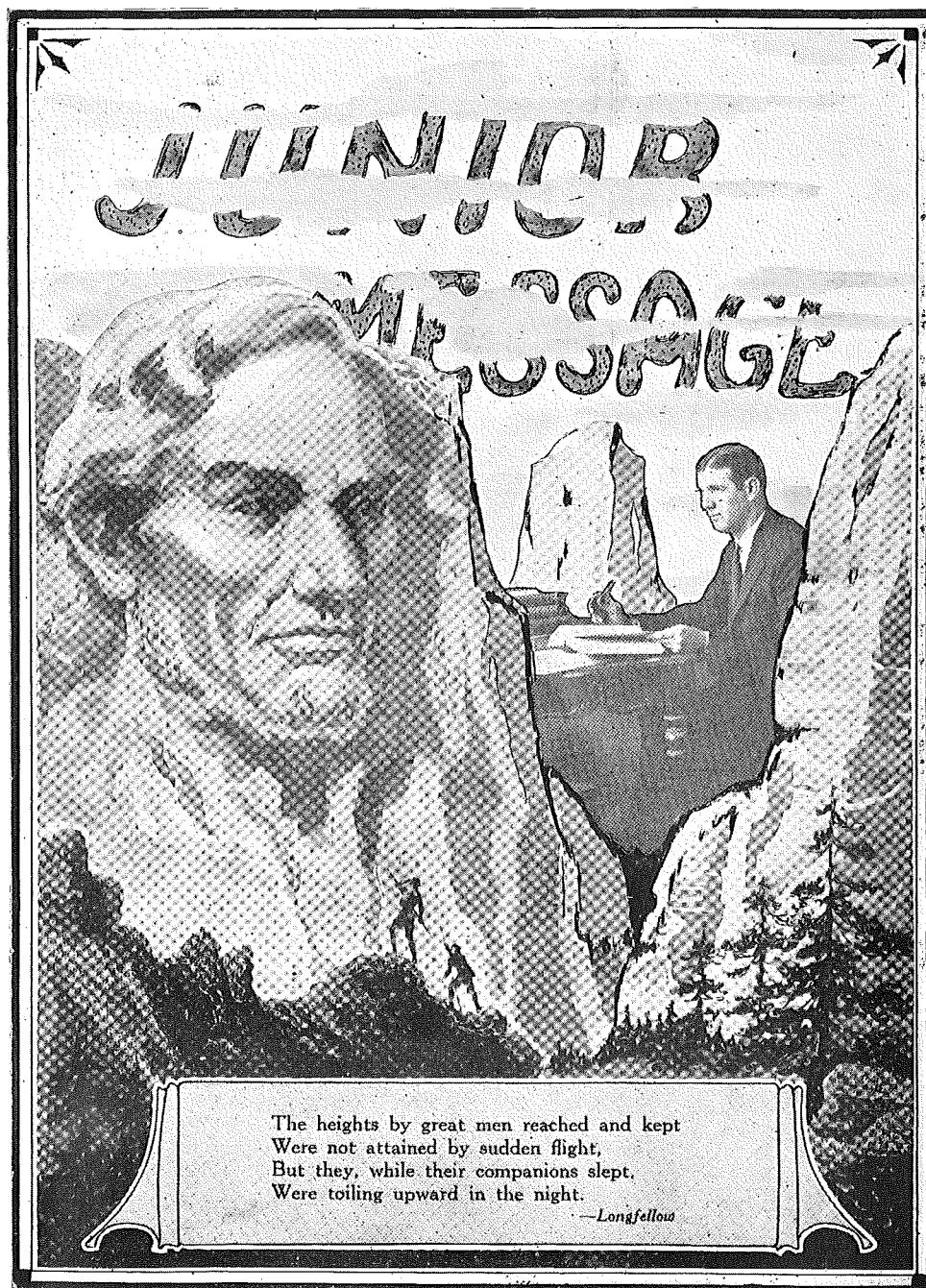


We have two girls from the Texas University with us. Opal Whitaker is at the head of the Commercial Department and Mary Ellen Yarbrough is physical training instructor. Since Opal has a sweet personality, she might persuade Sterling to write 20 words a minute with only 23 mistakes.

Mae Foster is the greatest Vitaphone speaker in the world. I am sure her course in public speaking was a great aid in helping to win this place.

Going up? Yes, at two o'clock. I am going to take the class for an airplane ride over the city. Don't be afraid, for I am a well-known aviatrix, having been the first to fly across the Pacific Ocean. All set? O. K. Let's go.





The heights by great men reached and kept  
Were not attained by sudden flight,  
But they, while their companions slept,  
Were toiling upward in the night.

—Longfellow



PRESIDENT

KITTY ARLEDGE

Jolly Girls' Club 1927, Pianist 1928, President and Pianist 1929, God's Sunshine Carriers 1928, Glee Club Pianist 1925-1929, Orchestra 1924-1929, Dramatic Arts Club President 1928, Basket Ball 1928, Vice-President Sophomore Class 1927-1928, President Junior Class 1928-1929, Assistant Editor Annual 1929.

She is another "Kitty on the Keys." She is one more kid, for she can do most anything—that's Kitty.

LORENA WHITE

Jolly Girls' Club 1927-1929, God's Sunshine Carriers 1928, Glee Club 1925-1929, Orchestra 1924-1929, Dramatic Arts Club 1923, Vice-President Junior Class 1928-1929.

Maybe she's little, or maybe she's not,  
But I'll bet my last quarter she can tell you what's what.

IOLA FOWLER

Red Jacket Secretary 1928-1929, God's Sunshine Carriers 1928, Basket Ball 1927-1929, Secretary-Treasurer Junior Class 1928-1929.

This poor little innocent lamb was the student council's worst fugitive.



SPONSOR

VICE-PRESIDENT

SECRETARY



JOHNNIE MAE RATLIFF

Jolly Girls' Club 1928-1929, God's Sunshine Carriers 1928, Glee Club 1928-1929

Never hurries, never worries, but always gets by somehow.

B. F. JOHNSON

Football 1928, Basket Ball 1928-1929, God's Sunshine Carriers 1928

Wide awake!—to catch a time to “snooze.”

GWENDOLYN REEDER

Jolly Girls' Club 1927-1929, Secretary 1929, God's Sunshine Carriers 1928, Glee Club 1927-1929, Orchestra 1927-1929.

I'm lucky, I'm happy, so maybe I'll get by.

CURTIS TYLER

Red Jacket President 1928-1929, God's Sunshine Carriers 1928, Dramatic Arts Club 1928.

True to her work, her words, and her friends.

PASCHAL HARVEY

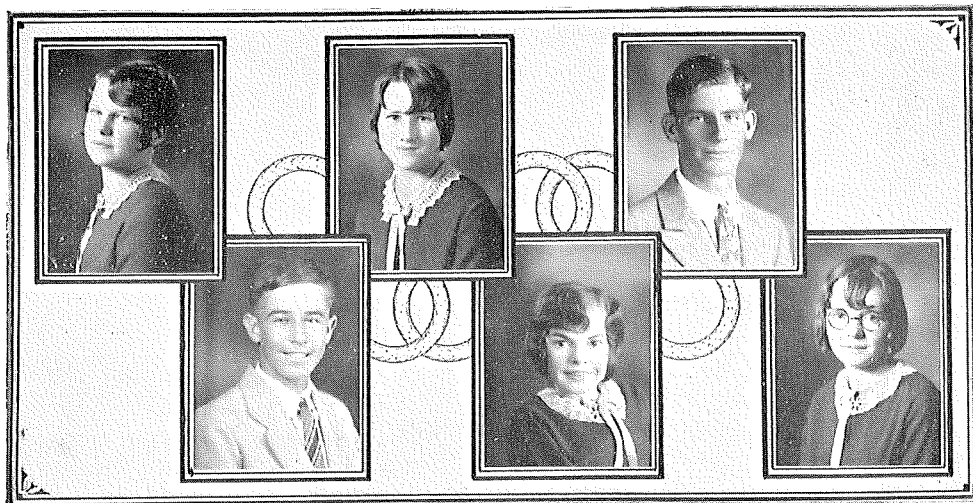
Football 1927-1928, Basket Ball 1927-1929, O. K. Club 1927-1929, God's Sunshine Carriers 1928.

If inches were money, he would be a millionaire.

INDA RAY

Red Jacket 1928-1929, God's Sunshine Carriers 1928, Dramatic Arts Club 1928.

Inda gets in there and “downs” every geometrical proposition.



#### RUBY HITT

Jolly Girls' Club 1927-1929, God's Sunshine Carriers 1928, Glee Club 1927-1929, Orchestra 1925-1929, Basket Ball 1924-1929, Sport Editor Annual 1929, Secretary Sophomore Class 1927-1928.

Ruby believes in "keep agoin'!"

#### BILL VEST

Football 1928, O. K. Club 1927-1928, God's Sunshine Carriers 1928. Only four years of algebra. Come on, Bill, that's good for an "A" plus student

#### MARIE FLETCHER

Red Jacket 1928-29, God's Sunshine Carr'ers 1928, Glee Club 1927-1929, Orchestra 1927-1929, Basket Ball 1926-1929.

Marie is a sturdy little guard and a dependable worker anywhere you put her

#### MARIE CHRISTIAN

Red Jacket 1928-1929, God's Sunshine Carriers 1928.  
As brim full of fun and mischief and glee  
As any mortal girl could be.

#### MILTON CHAPMAN

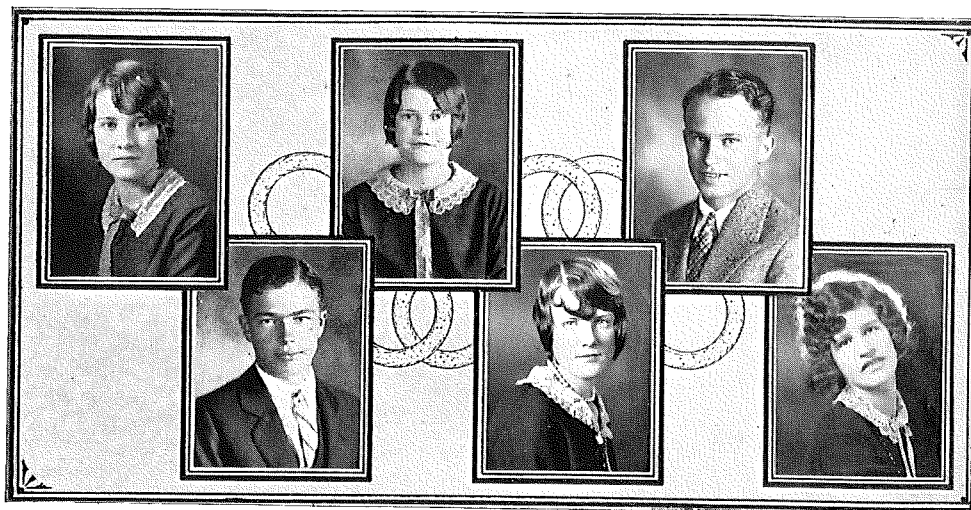
Football 1927-1928, Captain 1929, Basket Ball 1927-1929, O. K. Club 1927-1828, God's Sunshine Carriers 1928, Baseball 1927, Band 1924-1929.

We would say something about him, but he would argue us out of it.

#### ELIZABETH TICE

Red Jacket 1928-1929, God's Sunshine Carriers 1928.  
She's just another girl that any lady would be proud to own.





#### LOREE HAMILTON

Red Jacket Vice-President 1928-1929, God's Sunshine Carriers 1928.

Loree is quiet, but when she sees fit to speak, we listen.

#### JIM BEN WILLIAMS

Football 1927-1929, God's Sunshine Carriers 1928, O. K. Club 1927-1928, Baseball 1927-28.

Jim is not only blessed with good looks, but is our star "Lynx."

#### NORVELLE RAY

Jolly Girls' Club 1928-1929, God's Sunshine Carriers 1928, Basket Ball 1927.

A careful student—careful not to overdo.

#### MATTIE FOX

Red Jacket 1928-1929, God's Sunshine Carriers 1928, Glee Club 1928-1929, Basket Ball 1927-1929, Dramatic Arts Club 1928.

She's another sly fox. Just watch her step.

#### ALDON ERWIN

Football 1927-1929, God's Sunshine Carriers 1928, O. K. Club 1927-1928, Baseball 1927-1929, Band 1926-1929, Basket Ball 1927-1929.

"Oh that life should all labor be!"

#### MINNIE WILSON

Red Jacket 1928-1929, God's Sunshine Carriers 1928, Basket Ball 1926-1927.

She is SUCH an industrious girl!

## Junior Class Will

Now as we leave our Junior title,  
We will it to the Sophs,  
For dignity now must be ours  
To please the dear old "profs."

Peacock wills her small front seat  
And Bill—his innocence!  
Marie wills her Spanish book  
Inda—her reminescence.

Aldon wills his "Clippinger"  
Lorena—her giggles.  
Paschal wills his six feet two  
And John Bunny wills his wiggles.

Loree gives her quietness  
But Norvelle—ugh! not so.  
Gwendolyn wills her lame "hop" foot  
And Curtis a broken toe.

B. F. Johnson's wide awake  
(To catch a time to snooze).  
Ruby leaves her notebooks,  
And Minkie leaves her shoes.

Iola leaves a typewriter  
(It has no "peck" left in it).  
Mattie wills her shorthand  
With all word signs included.

Then there's "Rat" and Jim Ben, too,  
For each one wills an arm.  
Come on, Sophs, don't be scared;  
We wouldn't do you harm!

Last (but not least) I will my false teeth  
And a cork leg to boot,  
A cedar chest, a bum glass eye,  
And . . . . . go ahead and shoot!

—KITTY ARLEDGE.

## Junior Class Prophecy

This, the first day of June, 1936, the famous Junior Class of '29, once again is gathered around one large table at the Ritz-Carlton in Philadelphia. We are all here, all 21 of us, and each successful in his profession. At my right is Peacock Christian. After leaving the school, Peacock saw fit to change her name to Madame LeShar from "gay Paree", hence the popularity of her fashion shop. She sends out most of our fashions in clothing and is extremely popular as a designer on Fifth Avenue. "Little but loud" may be said of Peacock.

And who is that cool, reserved man sitting by Madame? None other than Dr. Bill Vest. He is now a teacher of His word in Washington, D. C. He is happy in his profession and has brought about many reforms in the states.

But who is that gay, light-hearted girl seated by him? "The Dancing Fool!" Well, Gwendolyn, your "hop" foot came in handy after all, didn't it? She is now tap dancer with Keith-Orpheum Circuit in the South.

Sitting next to Gwendolyn is a celebrity whom we have all seen. None other than Johnnie Mae, our class beauty, now a high-salaried star for Metro-Goldwyn-Mayer studios.

Then there is their other pal, (Johnnie, Gwennie, and Norvelle all run around together). Norvelle is private secretary to Mr. Woolworth of New York City.

Watch those athletes flock together! There Marie Fletcher now instructor of athletics at C. I. A., Denton, Texas. And there is Ruby Hitt, who won the cup in girls' swimming contest, and John Bunny Capman, who is now football coach at Harvard.

Then gathered around the other end of the table is a group of imparters of knowledge. There in their midst correcting every grammatical error is Aldon Erwin, now a professor of English at Columbia University. Inda Ray is also teaching Latin and French at Columbia. Then there is Loree Hamilton, home from Spain. She is teaching the seniors and senioritas our English language. There sits "slow but sure" B. F. He is teaching mathematics at S. M. U., Dallas, Texas. He just couldn't leave Texas. Look at the dean, would you. None other than Minnie Wilson, now dean of women at C. I. A. Marie and Minnie see a lot of each other now.

Look at the millionaire, would you? Well, Paschal, how do you like "Pa" Ford? You were lucky to be adopted by Henry since you were made manager of the firm.

Sitting in ease next to Paschal is Jim Ben Williams. Jim invented a device for fuelless airplanes and is now living easy. We expected this of you though, Jim.

Look at "Somebody's Stenogs." Mattie and Curtis are still pals and work for the same firm in sunny Arizona. Flappers?—you're right.

Look at that beautiful girl engaged in conversation. Iola Fowler is owner of a large, modernly equipped beauty shoppe in California.

Then on Lorena's left sits an artist. We expected Elizabeth Tice to be one, because her biology drawings showed her ability. She is very successful in her line of work.

Then last and least, too, comes Lorena and I. We are "Kitzy and Mitzy," comic-opera stars with the Chicago Civic Opera Company.

There yo usee our class just as happy, thankful, and enthusiastic over our work as we were as juniors back in '29.

—KITTY ARLEDGE.

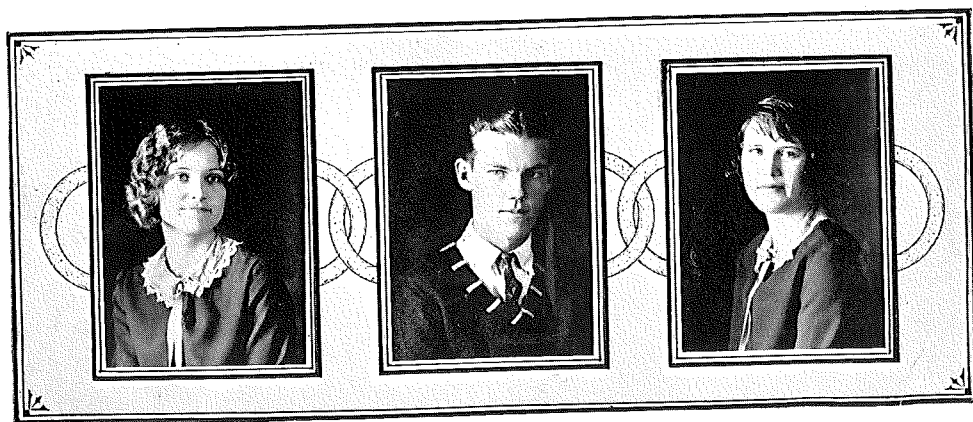


# Sophomores





President.....Elbertine Campbell  
 Vice-Persident.....Midge Anderson  
 Secretary.....Fattie Davidson  
 Treasurer.....Ada Rutherford





Thelma Horton  
 Elbertine Campbell  
 Opal Patterson  
 Mildred Miller  
 Lloyd Johnson  
 Bryan Brister  
 George Burgess  
 Lillie McMenamy  
 Lonnie D. Flanagan  
 Gertice Reynolds  
 Ada Rutherford

Marie Dunsworth  
 Millie Sue Miller  
 Midge Anderson  
 Floyd Dunnsworth  
 Jessie Rogers  
 Homer Taylor  
 Levie Brandon  
 Alma Walker  
 Bill Webb  
 Mary Ann Rankin

# Freshmen



President..... Jewel Harbin  
 Sponsor..... Mr. L. T. Cubstead  
 Vice-President ..... Jack Erwin  
 Secretary-Treasurer ..... Mary Stenbridge



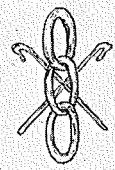


Mary Schumacher  
 Vertie Lee White  
 Jessie Smoke  
 Rose Thranert  
 Paul Campbell  
 Morris Estep  
 Catherine Brown  
 Velma Bishop  
 Jay Arnold  
 Selena Yarbrough  
 Mary Stembridge  
 Jack Russey

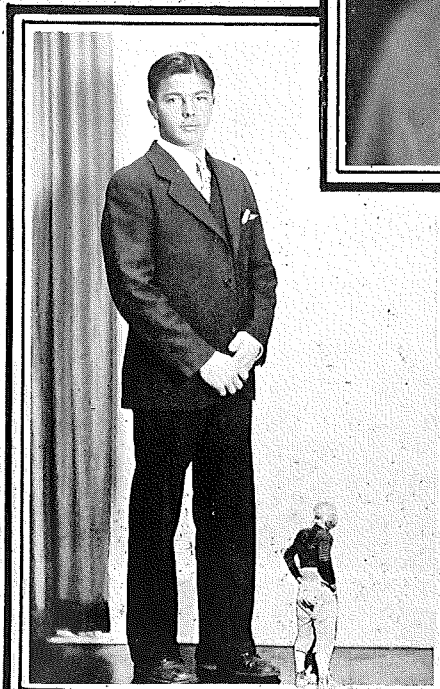
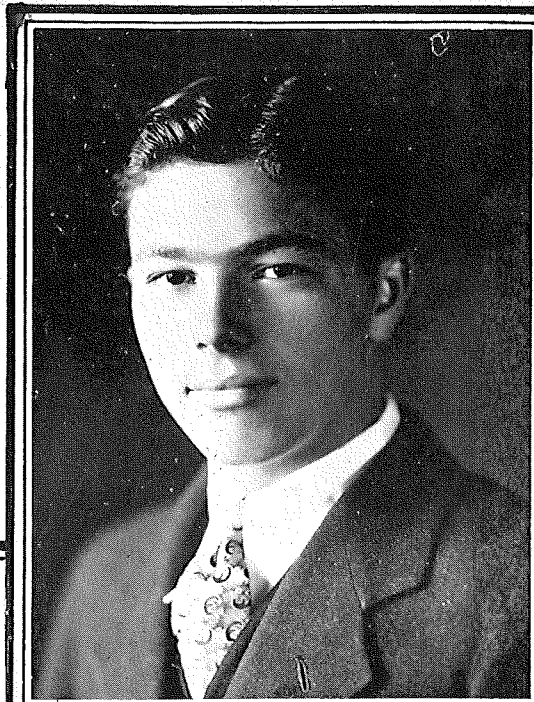
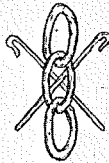
Jewel Harbin  
 Edra Anderson  
 Pauline Baldwin  
 John Allman  
 Carl Perry  
 Neil Nelson  
 Nevo Standifer  
 Lucy Mae Cruze  
 Margaret Davidson  
 Temp Fletcher  
 Victor Lewis

# Favorites

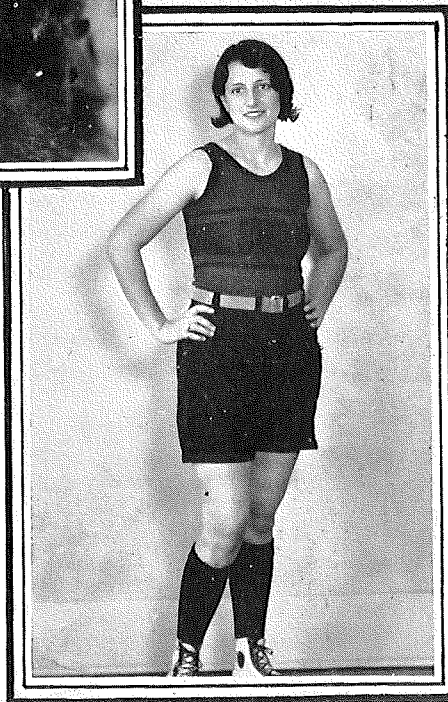
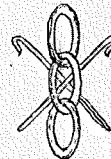




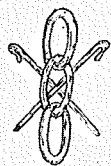
MIDGE  
ANDERSON  
MOST BEAUTIFUL  
GIRL



JIM BEAN  
WILLIAMS  
MOST HANDSOME  
BOY



PEARL  
FLETCHER  
MOST POPULAR  
GIRL

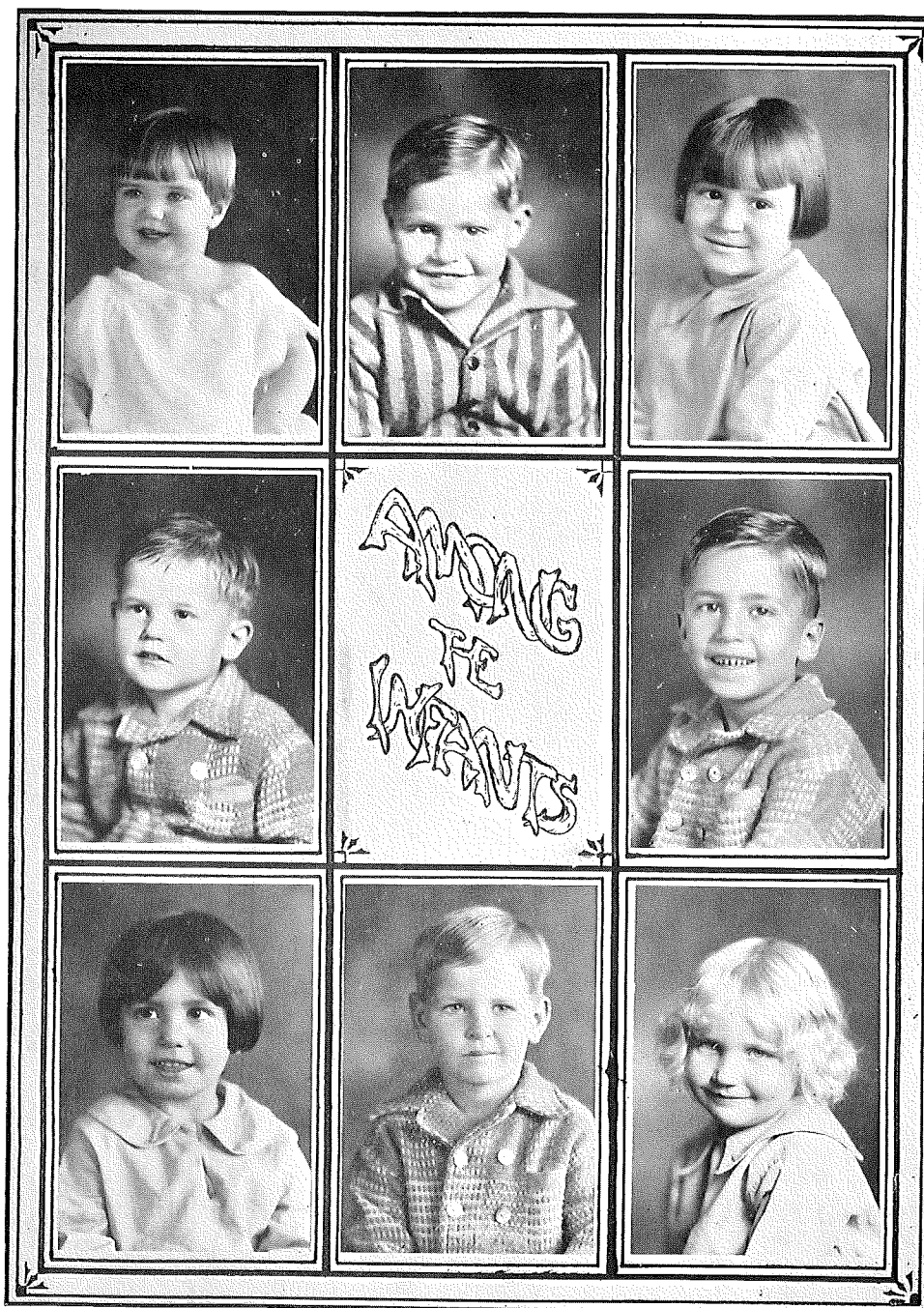


BILL WEBB  
— MOST —  
POPULAR BOY





MELBA —  
— CHAPMAN  
EVERY-BODY'S  
— FRIEND —

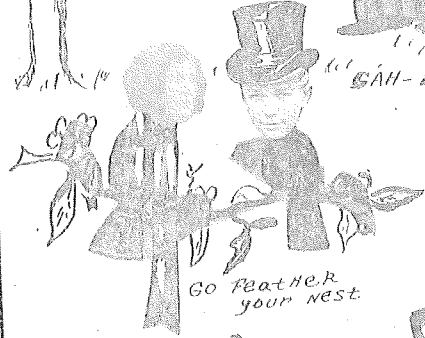
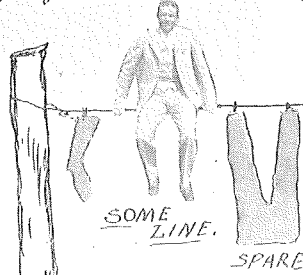
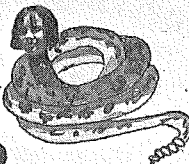




SECRET



Poor  
Boys.



[illegible]

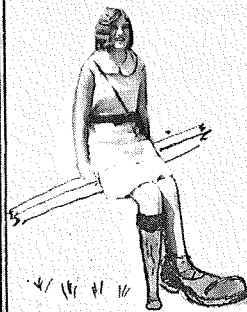
# NO APOLOGIES



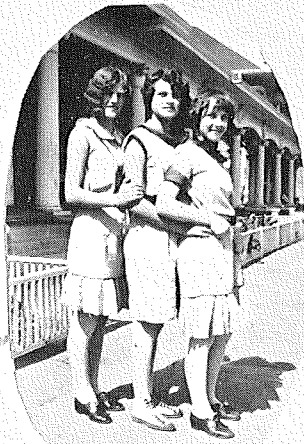
ASK THEM  
THEY UNDERSTAND



BUT WE'RE BOTH FISH

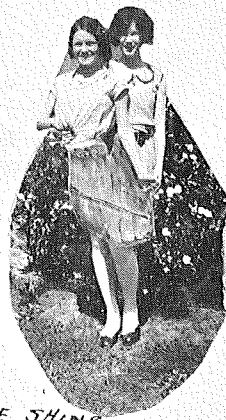


PIECES OF EIGHT



NONSRIQ

POSIES



WE SHING  
FIVE-IN-ONE



GAME OF LOVE



WATCH YOUR STEP

# Organizations

# Orchestra

## Horns

Marie Fletcher

Margaret Davidson

## Cornets

Lorena White

Kittie Arledge

## Drums

Gwendolyn Reeder

## Piano

Vertie Lee White

## Clarinets

Ruby Hitt

Frankie Hitt

## Trombone

Elbertine Campbell

## Violins

Midge Anderson

Opal Whitaker

Melba Chapman

Julia Hall

Edna Wilkins

Veneta Webb

## Director

Mr. W. O. Barlow



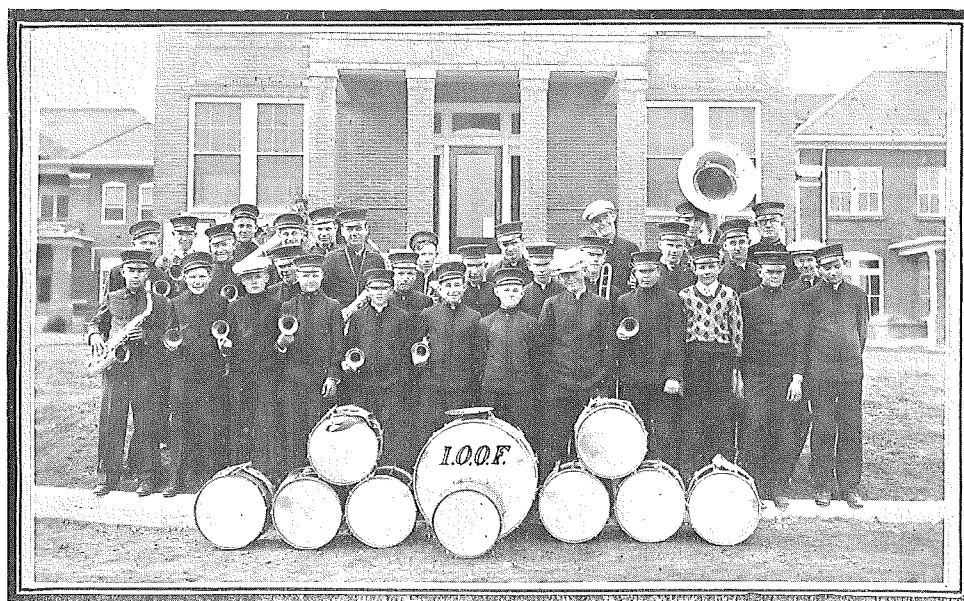
# Band

Homer Taylor  
Sydney Awalt  
Bryan Brister  
Wilson Dees  
Jessie Rogers  
Henry Horn  
Spencer Bonham  
Jeff Yarbrough

Joe Bonham  
Neil Nelson  
H. J. Tice  
David Simms  
Victor Lewis  
Sterling Brister  
Fattie Davidson  
Sammie Cruze

T. J. Harwell  
Max Estep  
Dudley Fox  
Paul Campbell  
George Linville  
Ocie Williams  
Milton Chapman  
Jack Erwin

**Director**  
Mr. W. O. Barlow





## Glee Club

Julia Hall  
Vertie Lee White  
Marian Rankin  
Pearl Fletcher  
Margaret Davidson  
Rose Thranert  
Lorena White

Opal Whitaker  
Kittie Arledge  
Marie Fletcher  
Grace Gibson  
Edna Wilkins  
Johnnie Mae Ratliff  
Ruby Hitt

Mattie Fox  
Veneta Webb  
Midge Anderson  
Helen Rankin  
Melba Chapman  
Gwendolyn Reeder  
Martha Alford

### Director

Mrs. P. J. Fenley



## Jolly Juniors

President ..... Hope Harvey  
Vice-President ..... Opal Patterson  
Secretary-Treasurer ..... Thelma Horton  
Pianist ..... Florine Buckalew  
Sponsor ..... Mae Foster



# Jolly Girls

## FIRST TERM

## SECOND TERM

President.....	Pearl Fletcher.....	Kitty Arledge
Secretary-Treasurer.....	Melba Chapman.....	Gwendolyn Reeder
Pianist.....	Kitty Arledge.....	Kitty Arledge
Song Leader.....	Melba Chapman.....	Johnnie Mae Ratliff
Sponsor.....	Mr. Barlow.....	Mr. Barlow

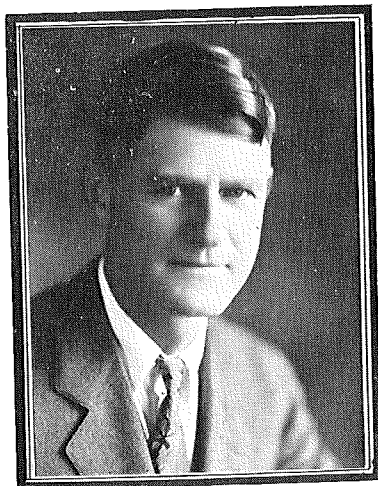


## Red Jackets

President.....Curtis Tyler  
Vice-President.....Loree Hamilton  
Secretary-Treasurer.....Iola Fowler  
Pianist.....Vertie Lee White  
Sponsor.....Mrs. Harris

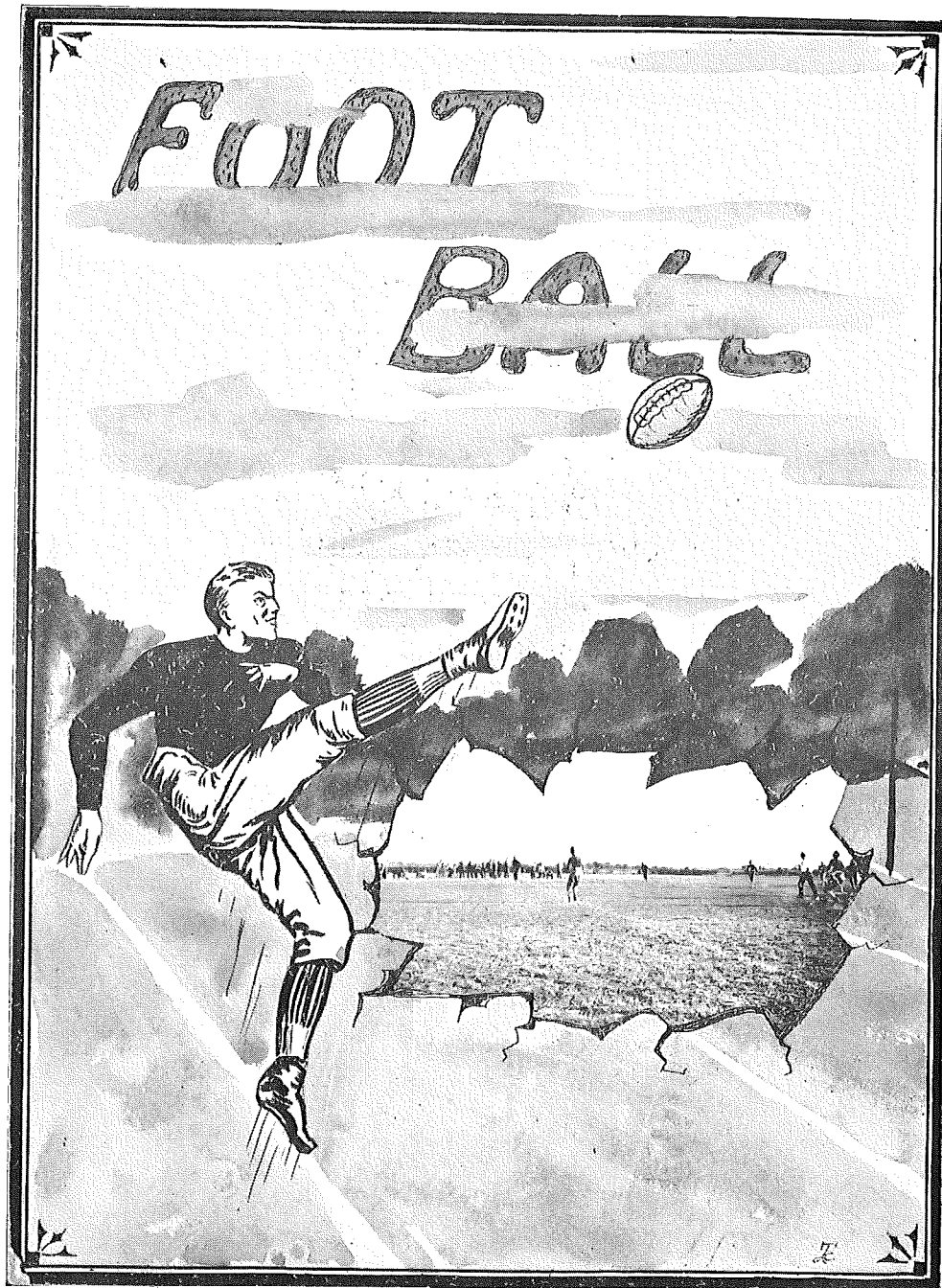


## God's Sunshine Carriers

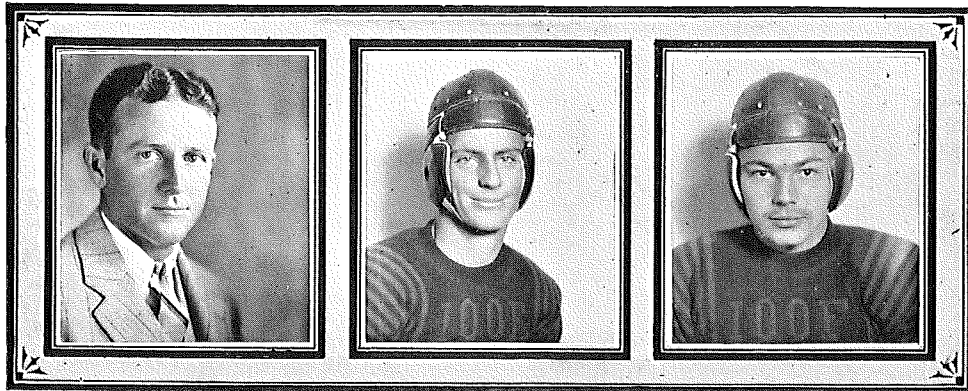


REV. JOE PATTERSON, Sponsor

The religious club was organized for the purpose of studying the Bible. Every girl or boy from fourteen on up had the privilege to join. They met every Sunday afternoon at three o'clock. Rev. Joe Patterson was the sponsor. He was very faithful to the leaders, helping them in every way possible. The club progressed under his supervision and an enthusiastic study of the Bible was made. Every member took an active part in it, and it moved along rapidly. Individual reports and programs were rendered occasionally. The club was finally disbanded until the summer by the necessity of practicing so much and trips made by the Glee Club, Orchestra and Band.







## "The Lynx"

JOHN B. CHAPMAN, Captain  
(Halfback)

John played his last year with "The Lynx" this year, and he has a record to be proud of. His clear head and lightning speed were a great asset to him during every game.

JIM B. WILLIAMS, Sec. Captain  
(Fullback)

Jim was one of the outstanding players of the season. He was consistent as a ground gainer, and a fighter from whistle to whistle. No line was too big or too heavy for Jim. When he couldn't go through, he went over.



### FRED WALKER

(Quarterback)

We are sorry to see Fred leave, because Fred can't be beat as a quarterback. He never lost his head, but always knew what to do and when to do it.

### WOODROW BLANKINSHIP

(Right Tackle)

Woodrow has the build for a wonderful football player, and his weight helped to balance his side of the line with that of "Fat Stuff" on the other end. He is steady, dependable, and sure, and will be power on the '30 team.

### WILBUR JOHNSON

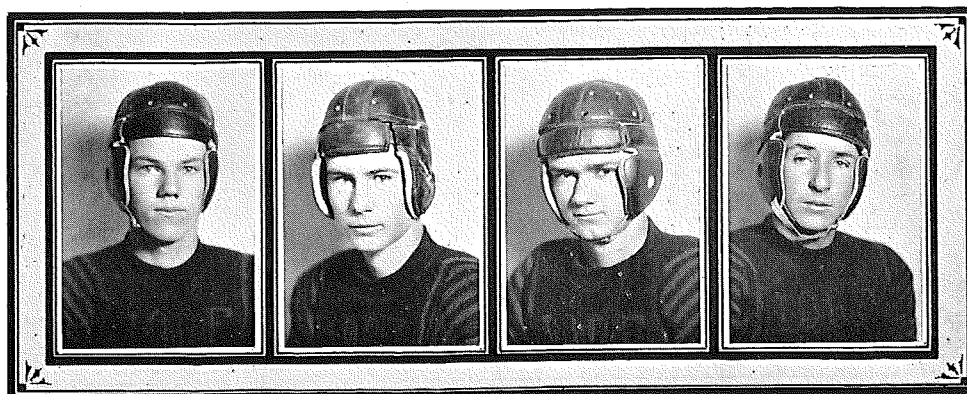
(Center)

"Hop" ran or jumped. He didn't care, just so he got what he was going after. He fought hard from the beginning to the end of every game.

### WILSON DEES

(Guard)

"Hey, Dees, fight 'em," was yelled many times during last year. Look what Wilson did this year! There is no telling what he will do for "The Lynx" next year.



### CLIFFORD DAVIDSON

(Tackle)

What more could we say about "Fat Stuff" than that he fought hard and played clean. He fulfilled his duty in every play, and was forever keeping a watchful eye.

### JAMES PATTERSON

(End)

"Stick in there and fight hard, James" was the cry of many voices. James will be here to fight for "The Lynx" next year also.

### PASCHAL MCMENANY

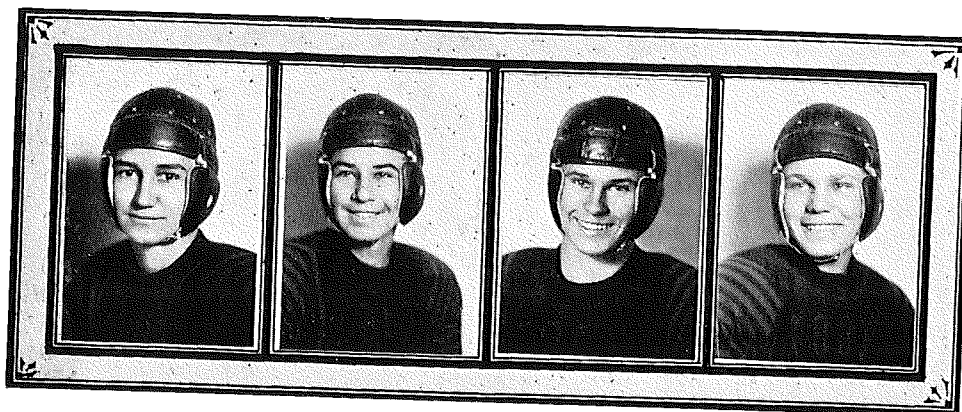
(Center)

"Lank" established a record this year that any player might be proud of—in that he always did his best. "Lank" will be with "The Lynx" next year.

### B. F. JOHNSON

(Left End)

This being "Loky's" first year, he did excellent work. Therefore, we expect great things from him in the future.



### SAMMY CREWS

(Halfback)

Sammy played his first year of football this year. He is a fast little halfback and ripped through the enemy's line for frequent gains. On defensive he was a sure and consistent tackler.

### BILL VEST

(Tackle)

Although Bill is a little timid in the school room, one can never tell it when he gets to fighting for "The Lynx." Bill did good work on the field this year, and has the intentions of doing better next year.

### ALDON ERWIN

(Right End)

Aldon, though small, was quick, shifty, and alert, and could be depended upon for a gain when it was needed. He will be missed by "The Lynx" next year.

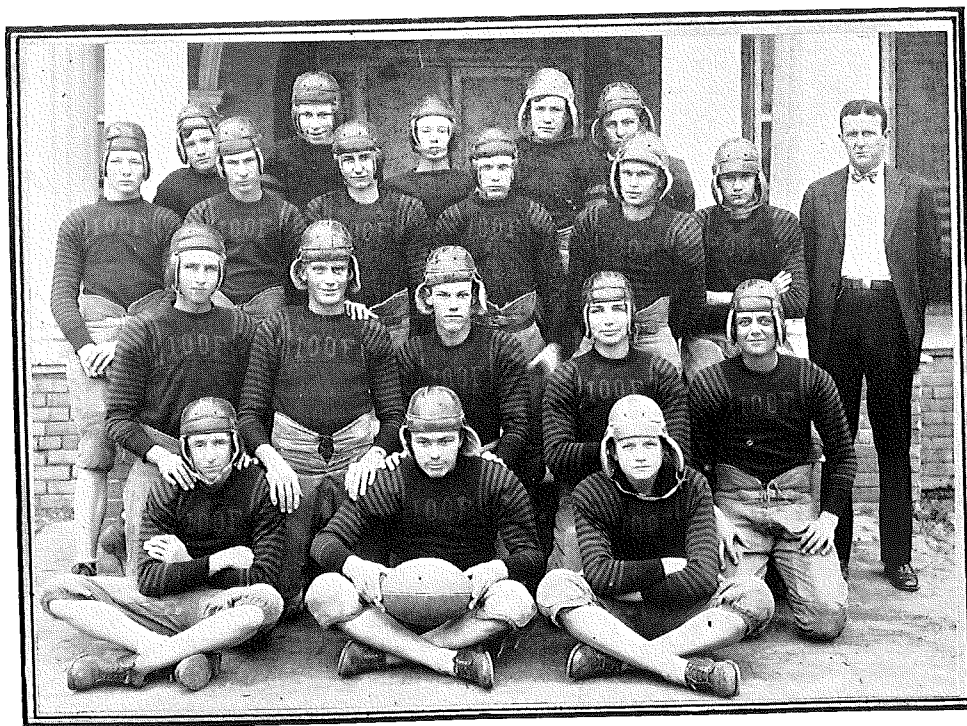
### GEORGE LINVILLE

(Halfback)

"Cuggy" always worked hard, no matter whether we were losing or winning. We hope he will do likewise next year.

## RESULTS OF FOOTBALL GAMES OF '29

September 21—"Lynx" .....	6	Kerens .....	0
September 28—"Lynx" .....	50	Junior High .....	0
October 5—"Lynx" .....	6	Corsicana Res. ....	0
October 18—"Lynx" .....	0	Kerens .....	19
October 26—"Lynx" .....	0	Thorton .....	30
November 2—"Lynx" .....	0	Malakoff .....	37
November 12—"Lynx" .....	42	Junior High .....	0



# Boys' Basketball

## RESULTS OF BOYS' BASKETBALL GAMES OF '29

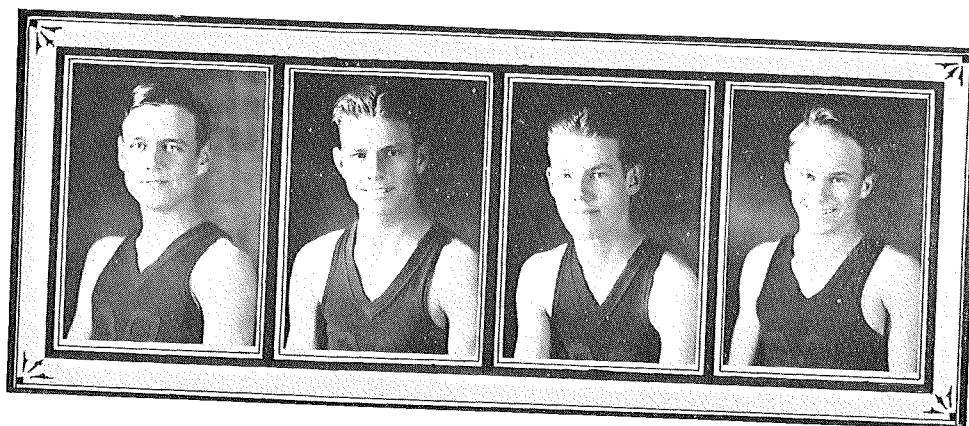
December 11—"Lynx" .....	20	Junior High .....	18
December 12—"Lynx" .....	5	Rura Sha .....	24
January 2—"Lynx" .....	18	"City Outlaws" .....	17
January 9—"Lynx" .....	14	Navarro .....	13
January 14—"Lynx" .....	10	Navarro .....	9
January 25—"Lynx" .....	20	Blooming Grove .....	29
February 4—"Lynx" .....	15	Rice .....	31

## TOURNAMENT GAMES

February 15—"Lynx" .....	22	Berry .....	11
February 16—"Lynx" .....	14	Navarro .....	16







FRED WALKER, Co-Captain

(Forward)

Fred, playing his second year, was continually in the right place. His ability as an extraordinary forward was recognized by everyone.

JAY ARNOLD

(Center)

Everyone knows Jay to be an all around athlete. He takes part in all the athletic activities of the Home. He takes part especially in basket ball and football. Jay gained much for "The Lynx" through his high jumping and lightning speed.

CLIFFORD DAVIDSON

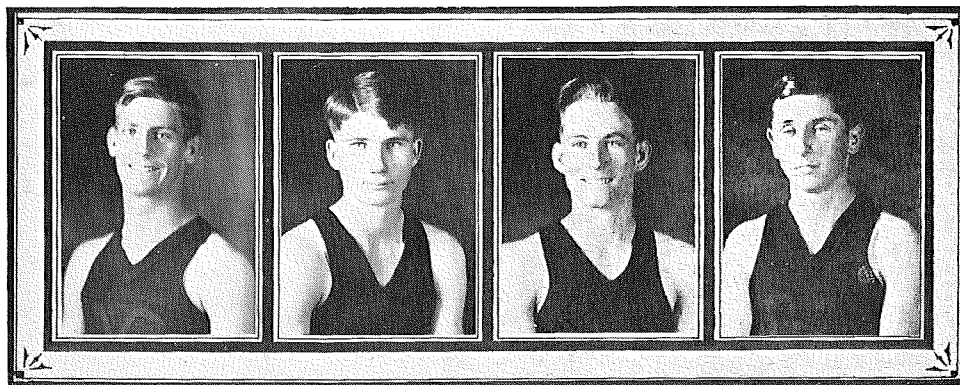
(Guard)

"Fat Stuff" is another one of our good guards. There were countless times when "Fat Stuff" interfered with his opponent's passing, and indirectly scored for us.

ALDON ERWIN, Co-Captain

(Forward)

Aldon was an excellent forward and Co-Captain, leading his team into the game with pep and determination. Aldon was fast and elusive.



JOHN B. CHAPMAN

(Guard)

John was a fighting player, who was a gentleman in all his dealings with his opponents. John got the ball and handled it with much skill.

PASCHAL HARVEY

(Guard)

Many of our games depended upon Paschal's good guarding. Opposing forwards found him a hard man to "shake off." Paschal's last year will ever be remembered.

JACK HUSSEY

(Guard)

Jack, like the rest of "The Lynx", is as swift as the wind. He kept many a forward from scoring by his "peppy" actions.

B. F. JOHNSON

(Forward)

"Loky" did not play with "The Lynx" much this year; but when he did play, he always aimed and made each shot count.

# Girls' Basketball



### RESULTS OF GIRLS' BASKET BALL GAMES OF '29

October 22—"The Bats" .....	23	Zion's Rest .....	17
November 1—"The Bats" .....	15	Corsicana .....	8
November 3—"The Bats" .....	28	Trinidad .....	12
November 8—"The Bats" .....	28	Zion's Rest .....	14
November 10—"The Bats" .....	30	Trinidad .....	27
November 14—"The Bats" .....	28	Rice .....	13
November 20—"The Bats" .....	34	Corsicana .....	12
November 21—"The Bats" .....	21	Bryan .....	13
November 23—"The Bats" .....	19	Barry .....	14
November 26—"The Bats" .....	41	Persley .....	6
December 5—"The Bats" .....	31	T. P. C. (Milford) .....	14
December 7—"The Bats" .....	20	Barry .....	11
December 25—"The Bats" .....	26	"Ex-Bats" .....	2
January 12—"The Bats" .....	36	Rice .....	6
January 16—"The Bats" .....	16	Navarro .....	4
January 26—"The Bats" .....	49	Bazette .....	10
February 2—"The Bats" .....	22	Navarro .....	14
February 8—"The Bats" .....	20	Providence .....	22
February 16—"Sub Bats" .....	11	Phillips' Chapel .....	10
February 23—"The Bats" .....	15	A. Harris' (Dallas) .....	14

### TOURNAMENT GAMES

March 1—"The Bats" .....	36	Bryan .....	16
March 2—"The Bats" .....	27	Purdon .....	18
March 2—"The Bats" .....	37	Navarro .....	13

### CHAMPIONSHIP GAMES

March 2—"The Bats" .....	22	State Home High .....	14
March 16—"The Bats" .....	49	Terrell High (Terrell) .....	16



RUBY HITT, Sec. Captain

(Forward)

"Ring 'em" seems to be Ruby's nickname. The games usually depended on Ruby, and we can all say that she was certainly dependable. If the ball didn't go in the first shot, she and Frankie played "ante-over" until it did. We are proud to have Ruby with "The Bats" another year.

PEARL FLETCHER, Captain

(Guard)

Pearl's watchful eye kept many a forward from scoring. She was always on her job, preventing forwards from "ringing 'em."

ADA RUTHERFORD

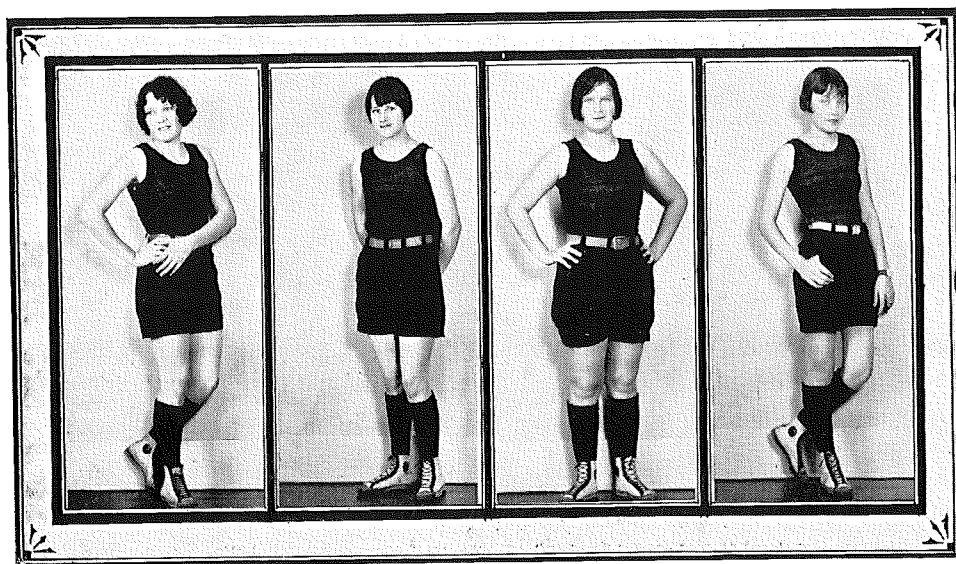
(J. Center)

"Spud" jumps so high that we have a perfect right to ask, "Hey, is it cold up there?" "Spud" was fast and always played hard. We are proud to say that she will be with "The Bats" for a few years yet.

FRANKIE HITT

(Forward)

Frankie was quick, shifty, and alert. She had that old "school-girl hop down pat." This caused "The Bats" to win many a game. We are sorry to lose Frankie this year.



### NEVELYN BLANKINSHIP

(R. Center)

"Dit" has a record to be proud of. She always did her best, and her best was always good.

### MARIE FLETCHER

(Guard)

Marie was a quick and clean little player. When forwards "got around" Marie, they had done something worth mentioning.

### LEVIE BRANDON

(Guard)

"Barrel" played in only a few games, but she worked hard from the beginning to the end of every game she played.

### VERTIE LEE WHITE

(R. Center)

Although Vertie Lee didn't play much this year, she has shown her ability as a fast R. Center. We know that she will be the power for "The Bats" in the future years.





## A Bit of Wit and Humor



Mr. Fenley (In Geometry Class): "All right, students, everybody look at the board, and I'll go through it again."



John Bunny (when his vaccination began to itch): "Mr. Bates, please scratch my vaccination; the Doctor told me not to."



The Height of Modesty—Bill Webb got behind the door to change his mind.



### An Ideal Girl

Hair—Johnnie Mae Ratliff  
Eyes—Pearl Fletcher  
Complexion—Gertice Reynolds  
Sport—Marie Fletcher  
Brain—Opal Whittaker  
Feet—Julia Hall  
Figure—Jewel Harbin  
Wit—Kitty Arledge  
Dancing Ability—Ruth Thranet  
Disposition—Curtis Tyler  
Acting Ability—Grace Gibson.



Gertice: "Rose, are you in love with John?"

Rose: "That's my business."

Gertice: "How is business?"

## A Bit of Wit and Humor



You know Mae Foster was in love with Geometry. She went so far as to write some poetry about it:

"If there should be another flood  
Then to this book I'd fly.  
If all the world should be submerged,  
This book would still be dry."



I could tell you some more jokes, but what's the use?—you would only laugh at them.



Miss Ross corrected a little boy who said:

"I ain't goin' in thar."

"That's no way to talk. Listen:

"I am not going in there; thou art not going in there; he is not going in there; we are not going in there; you are not going in there; they are not going in there. Do you get the idea?"

"Yes. They ain't nobody going in there."



Jack Erwin always hesitated when the teacher called on him to recite. The teacher, who wished to cure the pupils of bluffing, said to him:

"Jack, what would you call a person who pretends to know everything?"

"Why, a teacher of course," Jack replied.



Fenley: "What we need in this school system is brains."

New Teacher: "Yes, one doesn't have to be here long to understand your difficulty."

# A Bit of Wit and Humor



## An Ideal Boy

Hair—Jack Erwin  
Eyes—Jim Ben Williams  
Complexion—Temp Fletcher  
Football Ability—Jay Arnold  
Stylish Clothes—Fred Walker  
Acting Ability—Fatty Davidson  
Brain—Spencer Bonham  
Physique—Jack Hussey  
Disposition—Bill Webb  
Wit—John Bunny Chapman



It has always been a wonder to the kids how we happened to have a concrete road from Corsicana out here. One day the Board had a meeting. Mr. Sachse (Chairman of the Board): "Let us put our heads together and make a concrete road."



## Before Examinations:

Lord God of hosts, be with us yet  
Lest we forget, lest we forget.

## After Examination:

Lord God of hosts was with us not,  
For we forgot, for we forgot.



## Let's Laugh

A boy left the farm to get a job in the city. He wrote to his brother, who stuck to the farm, telling him of the joys of city life; he said:

"Thursday we autoed out to the country club where we golfed until dark. Then we motored to the beach for the week end."

The boy on the farm wrote back:

"Yesterday we buggied to town and baseballled all afternoon. Then we poked until morning. Today we muled out to the cornfield and gee-hawed until sundown. Then we suppered and piped for awhile. After that we stair-cased up to our rooms and bedstedded until the clock fived."

# *Let Borden Be Your Milk Man*

Forget your milk worries. Order Borden's Evaporated Milk. Double rich in cream. Sterilized. Sold in sealed containers instead of bottles. Guaranteed by the oldest and largest milk company in the U.S.A.

## *Central Texas Grocery Co.*

WHOLESALE GROCERS

Distributors

Corsicana, - - - Texas

**A. W. LEVERMANN & SON**

**WHOLESALE AND RETAIL**

**Wall Paper, Paints, Oils, Brushes, Artists' Materials,  
Picture Frames, Kalsomine, Window Glass  
and Benj. Moore's Paints**

**WE DO APPRECIATE YOUR BUSINESS**

**—MAY SUCCESS  
ATTEND YOUR  
EVERY EFFORT.**

**CORSICANA  
STEAM LAUNDRY  
COMPANY**

**Dependable Since 1909**

**CUNNINGHAM BROS.**

**Hardware and  
Sporting Goods**

**Phone 304**

**216 N. Beaton St.**



# *ODD FELLOWS--*

When visiting the Home are

invited to make this Hotel

yours.

## *THE BEATON HOTEL*

J. H. GIBSON, Manager

THE FRIEND OF YOUR HOME

GREETINGS FROM YOUR  
FRIENDS

Johnson Drug Co., Inc.  
Corsicana, Texas

"DOWNTOWN HEADQUARTERS"

---

American Bakery

"Where Quality Counts, We Win"

319-321 N. Beaton Street

Phones 1812 and 1813

# There Ain't No Maybe in a KB Bag

We manufacture a full line of

POULTRY AND STOCK FEED

as well as

KIMBELL'S BEST FLOUR  
AND CREAM MEAL

Sold all over Texas

## Kimbell Milling Co.

Fort Worth, Texas, and Branches

—Make Our Store  
Your HOME.

**J. M. DYER CO.**



**MERCHANDISE OF  
MERIT ONLY**

**Coulson Drug Co.**

**FARM WITH THE FARMALL TRACTOR**

**INTERNATIONAL TRUCKS AND TRACTORS**

**BEN ROSENBERG & SON**

**CORSICANA, TEXAS**

# VIRGINIA HART

## WASH FROCKS



THE DRESS FOR EVERY OCCASION  
STREET, SPORT, HOUSE, MOTORING

For Sale by Best Merchants

In Every Town and City



Snappy Styles — Fast Colors — Popular Prices

THIS PAGE DONATED BY A DISTRIBUTOR

—OF—

FINE FOOD PRODUCTS

WITH

BEST WISHES



# Autographs

# **LOUIS HASHOP CONFECTIONERY**

**HOME MADE CANDIES**

**California Fruits, Etc.**

**Wholesale and Retail Ice Cream Factory**

**Phone 926**

---

## **MONOGRAM FLOUR**

Has been the favorite in Central and North Texas for nearly thirty years, because of its purity and uniformity. Mrs. Housewife, ask your merchant for MONOGRAM FLOUR. You will be delighted with the results.

Manufactured by

**Greenville Mill & Elevator Co.**

Greenville, Texas

# Autographs